

# kontron

Kontron AIS GmbH



## FabEagle® Monitoring

### Factory-Wide Shop Floor Management for More Transparency in Production

FabEagle® Monitoring provides factory-wide shop floor management with a monitoring system and live data collection for factory visualization to cover your operating data and machine data acquisition requirements. It focuses on monitoring and reporting machine states, alarms, quantities, maintenance, and visualizing them in configurable dashboards.

As a scalable recording and evaluation system, it is versatile in the way it can be applied to all areas of production. This gives you a comprehensive overview of your production and maintenance efficiency at any time.

# Your benefits

- › Increasing machine utilization through systematic data preparation and evaluation
- › Improve team and shift collaboration through transparent evaluation of KPIs
- › Shorter downtimes thanks to effective maintenance management



## Features



### Dashboard

- › Flexible assignment and configuration of modules for KPIs, functions and notifications
- › Frequently used functions, links, lists, notes, and evaluations at a glance



### EquipmentHub

- › Management of machine and equipment master data
- › Provision of machine documentation and journal entries



### Monitoring

- › Systematic monitoring and evaluation of alarms, conditions, process values and malfunctions
- › Identification and overview of production-related KPIs



### eDocs

- › View, retrieve, and download documents
- › Integrated access and approval management



### KnowledgeBase

- › Document, link, evaluate and comment on best practice solutions
- › Easy search and filtering by individual topics



### OpenIssues

- › Intuitive creation and management of internal service tickets
- › Transparent cause research and follow-up of processing



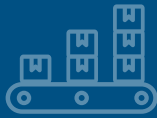
### Workflows

- › Preparation and processing of checklists for tests, workflows, and maintenance
- › Planning and managing complex workflows in multiple phases



### SoftwareCenter

- › Version management of the machine software
- › Organization of software versions and updates



### Boosting productivity and availability

Compare your machines and systems in terms of utilization, dependencies and states and discover untapped potential even across multiple sites.



### Increasing transparency

Ensure rapid exchange of information between teams, efficient management of machines and immediate response in the event of a malfunction with seamless recording and visualization of your specific KPIs.



### Optimizing maintenance management

Thanks to mobile task scheduling and documentation of maintenance and servicing, you have complete control over your maintenance management at all times, across all shifts and machines.

## Our integration capabilities

As a full-service provider, we handle all machine integration tasks, e.g. interface specification, software qualification, on-site testing, integration of systems into your production set-up.

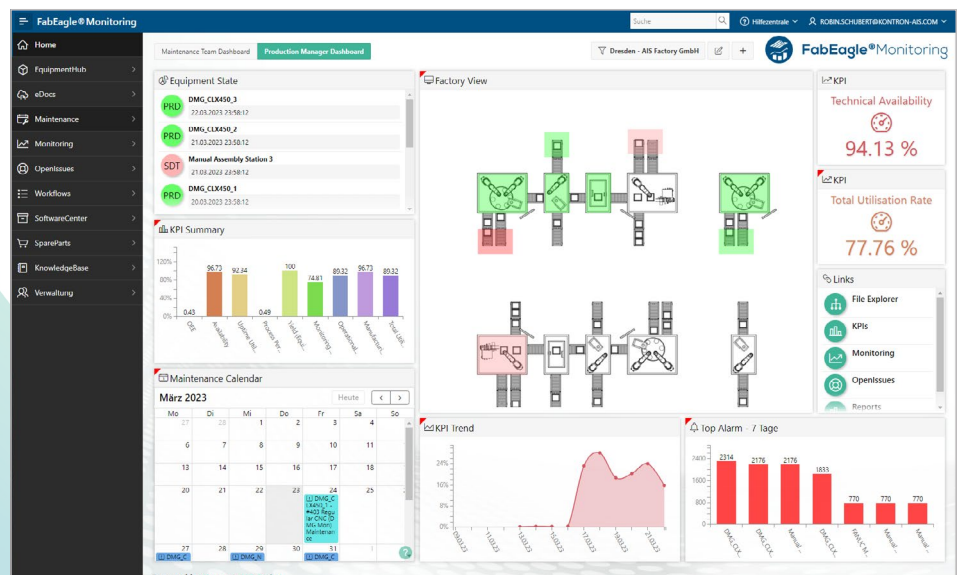


### Maintenance

- › Intuitive maintenance calendar with automatic notification function
- › Cyclical, alarm, condition-based or process value-based operational planning
- › Maintenance planning for predictive maintenance either by number of operating hours or type of use

## Our services

In addition to standardized industrial software solutions, we provide you with a wide range of know-how and application-specific services for all phases of your project. With more than 30 years of experience in successfully implemented automation projects, we support you in planning and optimizing your digitalized production.





## Kontron AIS GmbH

Kontron AIS GmbH sets the benchmark in industrial software – for more than 30 years and with an experienced team of over 200 employees. The proven software products and customized digitalization solutions enable machine and equipment builders as well as factory operators to break new ground in automation and secure long-term competitive advantages. Together with its customers, Kontron AIS implements worldwide cross-industry, intelligent digitalization strategies and solutions for the smart manufacturing of tomorrow.

As a subsidiary of the Kontron AG, Kontron AIS offers integrated, end-to-end IoT concepts consisting of hardware and software as well as worldwide project management, service, and support thanks to a global network.



Supply of Hardware for Control and IT Systems



Consulting and Requirement Engineering



Software Development



Flexible, Global Service and Support



On-Site Installation and Commissioning



Project Management and Training

Kontron AIS GmbH  
Otto-Mohr-Straße 6  
01237 Dresden  
Germany

Phone +49 (0)351 2166 0  
Fax +49 (0)351 2166 3000

**We are at your service:**  
[contact@kontron-ais.com](mailto:contact@kontron-ais.com)

**More information:**  
[www.kontron-ais.com](http://www.kontron-ais.com)

THE BENCHMARK IN INDUSTRIAL SOFTWARE